

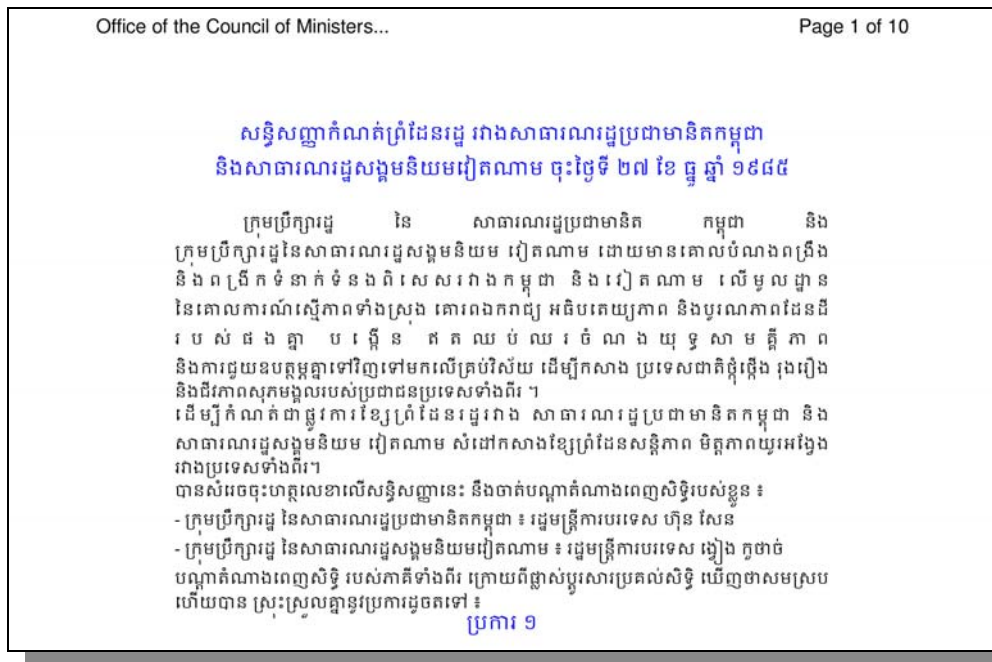


**ADDITIONAL INFORMATION PROVING
THAT THE MARKERS LOCATED IN
SAMRONG COMMUNE WERE
ENCROACHED INTO CAMBODIAN
TERRITORIES**

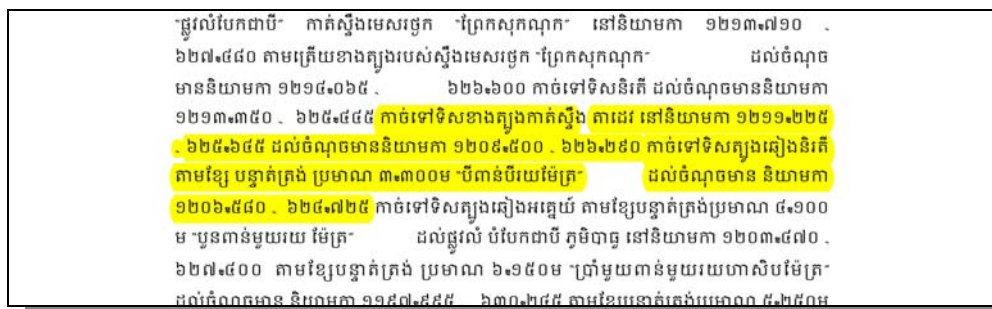
Border Points Listed in the 1985 Border Treaty

The 1985 border treaty concluded between the People's Republic of Kampuchea and the Socialist Republic of Vietnam provides UTM coordinates of several border points. The text of the 1985 border treaty is provided by the Cambodian Office of the Council on Ministers at the following link:

<http://www.pressocm.gov.kh/border/11.php>



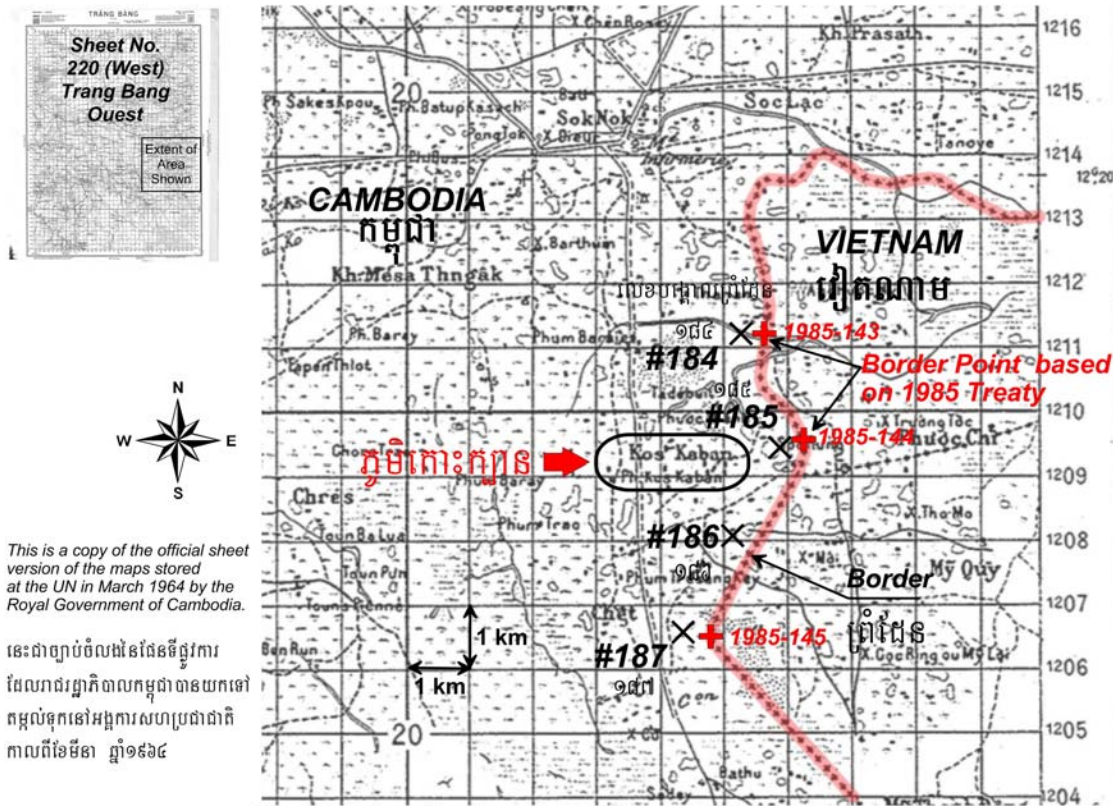
For the area near Koh Kban Kandal village, Samrong commune, Chantrea district, Svay Rieng province, the 1985 border treaty lists the coordinates of the following three (3) border points:



The coordinates above are UTM (Universal Transverse Mercator) coordinates and are summarized below:

Point No.	UTM x Coordinate meters	UTM y Coordinate meters
1985-143	625645	1211225
1985-144	626290	1209500
1985-145	624725	1206580

The location of these border points is in agreement with those shown on the French SGI (1:100,000 scale) map which is the official border map recognized by Cambodia and deposited at the UN. The following figure shows the location of these border points with respect to border markers #184 through #187.



This is a copy of the official sheet version of the maps stored at the UN in March 1964 by the Royal Government of Cambodia.

នេះជាច្បាប់ចម្លងនៃផែនទីផ្លូវការ
ដែលរាជរដ្ឋាភិបាលកម្ពុជាបានយកទៅ
តម្កល់ទុកនៅអង្គការសហប្រជាជាតិ
កាលពីខែមីនា ឆ្នាំ១៩៦៤

Map 4: Location of border posts #184 through #187 on the SGI Map
(Map Source: SGI 1:100 000, Sheet Title 220 (West) - Trang-Bang Ouest (1952))

ផែនទី ទី៤ : ចំណុចនៃបង្គោលព្រំដែនលេខ ពី ១៨៤ ដល់ ១៨៧ នៅលើផែនទី SGI វៀតណាម អាជ្ញាធរពាក់ ២ នៅឆ្នាំ១៩៥២
ប្រភពផែនទី : SGI 1:100,000 ឆ្នាំ១៩៥២

A copy of the SGI 1:100,000-scale map can be downloaded from the following link:

<http://sites.google.com/site/cambodiaborder/TrangBang.pdf?attredirects=0&d=1>

Coordinates of border markers 184 through 187 are provided in the following table:

ចំណុច GPS នៃបង្គោលព្រំដែន GPS LOCATION OF BORDER POSTS

លេខបង្គោល ព្រំដែន Border Post #	ខ្សែរយ:ទទឹង (ខាងជើង) Latitude			ខ្សែរយ:បណ្តោយ (ខាងកើត) Longitude		
	(អង្សា)			(អង្សា)		
	(Decimal Deg.)			(Decimal Deg.)		
184	10.958183	N	10 ° 57 ' 29.46 " N	106.146117	E	106 ° 8 ' 46.02 " E
185	10.942133	N	10 ° 56 ' 31.68 " N	106.151700	E	106 ° 9 ' 6.12 " E
186	10.929666	N	10 ° 55 ' 46.80 " N	106.145067	E	106 ° 8 ' 42.24 " E
187	10.916050	N	10 ° 54 ' 57.78 " N	106.137867	E	106 ° 8 ' 16.32 " E

Coordinates Conversion of 1985 Border Treaty Points to CGS84 Longitude and Latitude Coordinates

The UTM coordinates of the border points above can be converted to latitude and longitude coordinates through the following website:

<http://home.hiwaay.net/~taylorc/toolbox/geography/geoutm.html>

As illustrated in the figure below, the conversion is done by entering the UTM x and y coordinates along with the UTM zone for Cambodia (zone 48, hemisphere N).

Geographic/UTM Coordinate Converter

You can convert between geographic coordinates and Universal Transverse Mercator (UTM) coordinates using this form.

Note: This is a JavaScript-powered form. If you have difficulties using this form, check your browser's settings to make sure you have enabled JavaScript.

Programmers: The JavaScript source code in this document may be copied and reused without restriction.

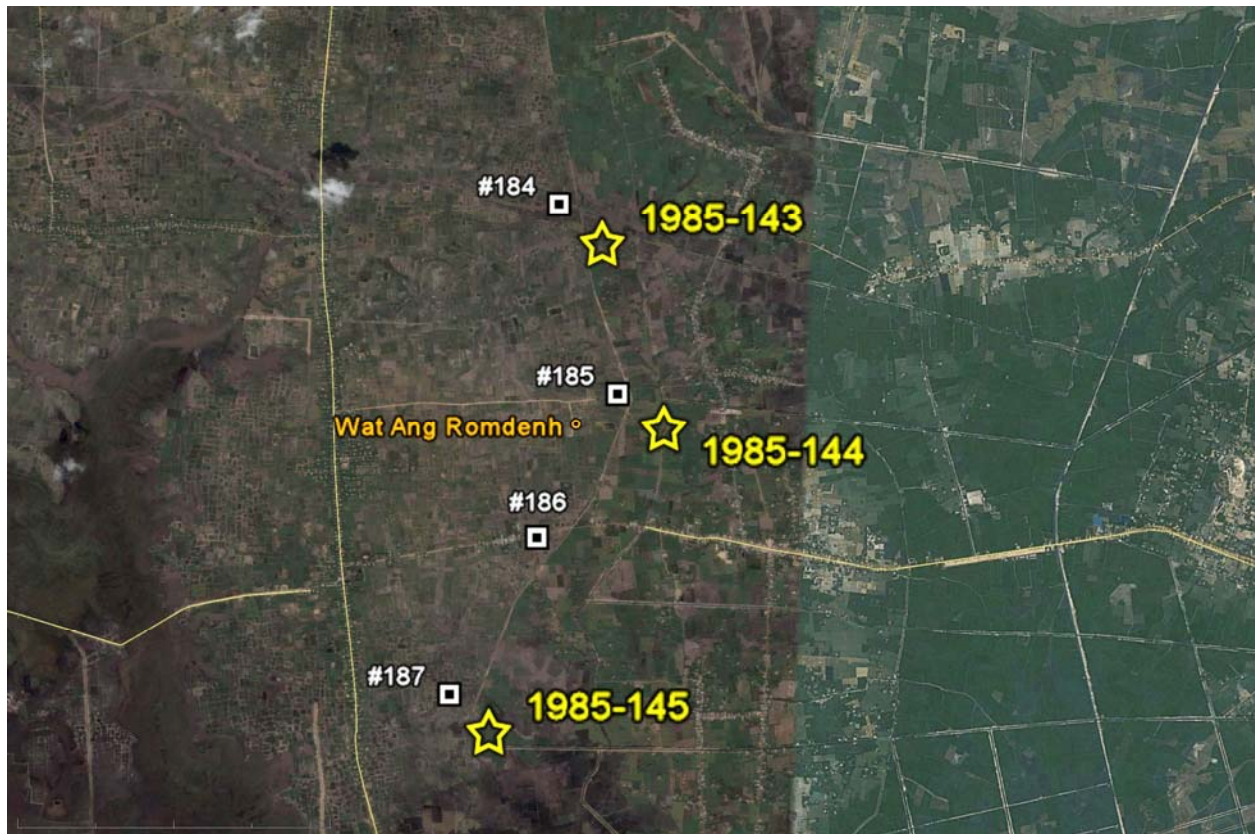
If you have a Java 1.1-compliant browser, and especially if you need to use an ellipsoid model other than WGS84, you may want to try the [Coordinate and Datum Transformations tool](#).

Geographic (degrees decimal)	To/From	UTM
lon <input type="text" value="106.14130748357799"/>	>>	x <input type="text" value="624725"/>
lat <input type="text" value="10.91286408699911"/>	<<	y <input type="text" value="1206580"/>
		zone <input type="text" value="48"/>
		hemisphere <input checked="" type="radio"/> N <input type="radio"/> S

The output of this conversion is latitude and longitude coordinates using the WGS84 reference frame. This reference frame is the same one used by satellite photos provided by Google Earth. The following are the longitude and latitude of the border points above:

Point No.	UTM x Coordinate meters	UTM y Coordinate meters	Longitude (Degrees)	Latitude (Degrees)
1985-143	625645	1211225	106.14989	10.95483
1985-144	626290	1209500	106.15573	10.93921
1985-145	624725	1206580	106.14131	10.91286

Using the longitude and latitude coordinates above, we can place them on the Google Earth satellite image to show their locations with respect to the border markers surveyed by GPS, as shown in the following figure:



This satellite photo clearly shows that the border points obtained from the 1985 border treaty are located much to the east of the border markers planted in Koh Kban Kandal village.

The above information proves once again that border markers #185 through #187 are clearly encroached inside Cambodian territories, in stark violation of the 1985 border treaty.